

STATISTICAL SECTION

This part of the City of Fargo's comprehensive annual financial report presents detailed information as a context for understanding what the information in the financial statements, note disclosures, and required supplementary information says about the City's overall financial health.

<u>Contents</u>	<u>Page</u>
Financial Trends	120
These schedules contain trend information to help the reader understand and assess how the government's financial position has changed over time.	
Revenue Capacity	125
These schedules contain information to assist the reader in understanding and assessing the factors affecting the government's ability to generate its own-source revenues.	
Debt Capacity	140
These schedules present information to help the reader assess the affordability of the government's current levels of outstanding debt and the government's ability to issue additional debt in the future.	
Demographic and Economic Information	149
These schedules offer demographic and economic information to (1) assist the reader in understanding the socioeconomic environment within which a government operates and (2) provide information that facilitates comparisons of financial statement information over time and among governments.	
Operating Information	153
These schedules contain service and infrastructure data to help the reader understand how the information in the government's financial report relates to the services the government provides and the activities it performs.	

Sources: *Unless otherwise noted, the information in these schedules is derived from the comprehensive annual financial reports for the relevant year. The City implemented GASB 34 in 2002; schedules presenting government-wide information include information beginning in that year.*

CITY OF FARGO, NORTH DAKOTA
NET ASSETS BY COMPONENT
LAST NINE FISCAL YEARS
(accrual basis of accounting)
(UNAUDITED)

	2010	2009	2008	2007	2006	2005	2004	2003	2002
Governmental activities									
Invested in capital assets, net of related debt	\$ 142,709,681	\$ 133,054,594	\$ 136,829,790	\$ 109,639,923	\$ 100,497,504	\$ 61,311,933	\$ 79,683,681	\$ 78,381,281	\$ 40,807,699
Restricted	83,724,522	88,187,372	99,854,244	101,928,282	106,449,181	180,030,481	153,319,865	122,229,665	139,179,558
Unrestricted	(26,809,117)	(13,592,579)	(24,461,521)	445,006	7,637,497	4,409,329	(13,355,138)	(33,695,934)	(30,308,995)
Total governmental activities	199,625,086	207,649,387	212,222,513	212,013,211	214,584,182	245,751,743	219,648,408	166,915,012	149,678,262
Business-type activities									
Invested in capital assets, net of related debt	488,520,828	447,423,939	405,649,311	384,874,278	365,275,829	341,630,870	330,535,797	306,670,260	298,956,283
Restricted	34,129,228	29,310,590	27,578,567	20,037,327	12,506,543	10,728,371	9,254,788	7,481,220	5,940,670
Unrestricted	22,190,520	20,655,890	18,795,131	19,752,324	22,993,008	30,520,724	31,267,494	32,438,098	25,245,345
Total business-type	544,840,576	497,390,419	452,023,009	424,663,929	400,775,380	382,879,965	371,058,079	346,589,578	330,142,298
Primary government									
Invested in capital assets, net of related debt	631,230,509	580,478,533	542,479,101	494,514,201	465,773,333	402,942,803	410,219,478	385,051,541	339,763,982
Restricted	117,853,750	117,497,962	127,432,811	121,965,609	118,955,724	190,758,852	162,574,653	129,710,885	145,120,228
Unrestricted	(4,618,597)	7,063,311	(5,666,390)	20,197,330	30,630,505	34,930,053	17,912,356	(1,257,836)	(5,063,650)
Total primary government	\$ 744,465,662	\$ 705,039,806	\$ 664,245,522	\$ 636,677,140	\$ 615,359,562	\$ 628,631,708	\$ 590,706,487	\$ 513,504,590	\$ 479,820,560

CITY OF FARGO, NORTH DAKOTA
CHANGES IN NET ASSETS
LAST NINE FISCAL YEARS
(accrual basis of accounting)
(UNAUDITED)

	2010	2009	2008	2007	2006	2005	2004	2003	2002
EXPENSES									
Governmental activities:									
General government	\$ 16,172,223	\$ 16,061,513	\$ 12,628,766	\$ 11,988,162	\$ 9,636,548	\$ 9,879,150	\$ 9,065,280	\$ 9,878,835	\$ 7,750,281
Public safety	31,292,462	31,299,101	27,258,895	24,518,517	23,310,046	22,823,346	20,418,950	19,478,160	18,183,284
Public works	56,086,729	61,560,495	66,435,406	53,116,809	35,070,333	28,942,829	30,419,839	26,666,970	23,402,864
Public health & welfare	9,184,914	8,619,558	7,802,377	7,381,740	6,671,796	6,695,429	6,216,803	6,078,364	5,253,080
Recreation & culture	6,176,197	7,290,768	5,877,783	5,564,318	5,257,930	4,433,031	4,119,697	4,095,873	3,881,808
Urban redevelopment	4,986,361	5,270,433	4,901,145	5,530,189	5,330,190	5,310,907	6,338,365	4,589,532	2,201,068
Transportation	7,637,009	8,240,985	6,712,613	5,839,730	5,297,182	4,210,866	4,261,253	4,509,006	4,083,902
General support	1,576,481	1,279,040	1,252,486	1,709,940	1,297,392	1,110,473	1,126,474	979,189	1,292,645
Intergovernmental	-	-	-	-	-	-	185,185	333,333	333,333
Interest and fiscal charges	13,203,253	10,970,999	10,078,666	10,383,847	10,562,600	8,943,842	7,739,764	7,333,221	6,777,064
Total governmental activities expenses	146,315,629	150,592,892	142,948,137	126,033,252	102,434,017	92,349,873	89,891,610	83,942,483	73,159,329
Business-type activities:									
Municipal airport authority	6,920,335	6,380,673	6,340,451	6,492,808	5,630,173	5,575,563	5,039,598	4,724,563	4,687,868
Water	13,378,237	13,172,848	12,739,834	11,186,131	13,690,417	12,011,121	11,337,470	11,248,525	10,868,658
Wastewater	8,114,318	7,282,660	6,810,660	6,759,994	6,280,502	6,088,183	5,781,810	6,112,218	5,566,644
Storm sewer	3,743,309	3,573,700	3,318,002	3,137,414	2,963,669	2,852,773	2,635,020	2,517,738	2,253,407
Solid waste	8,229,701	7,524,388	7,739,012	6,615,557	5,673,508	6,505,547	6,316,798	5,426,961	6,210,997
Fargodome	7,284,833	6,872,075	6,781,837	7,544,366	7,562,959	7,748,926	9,025,485	8,280,932	8,410,092
SE Cass	46,757	66,047	66,979	52,694	66,919	69,321	55,467	56,529	58,047
Vector control	592,516	389,667	589,113	479,179	367,989	550,956	410,804	111,130	-
Street lighting	2,237,468	-	-	-	-	-	-	-	-
Forestry	1,475,962	1,361,803	1,271,640	1,198,305	1,112,526	990,339	1,021,922	924,895	775,133
Total business-type activities expenses	52,023,436	46,623,861	45,657,528	43,466,448	43,348,662	42,392,729	41,624,374	39,403,491	38,830,846
Total primary government expenses	\$ 198,339,065	\$ 197,216,753	\$ 188,605,665	\$ 169,499,700	\$ 145,782,679	\$ 134,742,602	\$ 131,515,984	\$ 123,345,974	\$ 111,990,175
PROGRAM REVENUES									
Governmental activities:									
Charges for services:									
General government	\$ 2,443,507	\$ 2,406,704	\$ 2,238,848	\$ 2,371,413	\$ 2,632,513	\$ 2,527,843	\$ 2,090,709	\$ 2,007,996	\$ 2,172,959
Public safety	4,264,740	4,285,553	4,694,548	4,876,717	5,587,229	4,852,471	4,350,988	3,760,822	3,692,177
Public works	11,163,026	8,418,374	8,041,216	4,962,198	5,497,488	5,677,239	5,753,316	5,902,509	6,446,223
Public health & welfare	2,621,144	2,439,988	2,341,930	2,479,295	2,258,421	2,127,051	1,971,542	1,833,185	1,635,727
Recreation & culture	739,345	676,537	702,866	652,563	731,817	631,439	645,206	602,381	586,512
Urban redevelopment	1,659,901	2,409,435	2,974,370	3,512,005	4,483,915	3,343,959	3,107,679	1,401,233	421,305
Transportation	3,076,024	2,875,615	2,760,860	2,561,343	1,878,831	1,842,756	1,731,537	1,546,864	1,422,448
Operating grants and contributions	13,938,290	19,366,139	8,736,849	7,374,752	6,807,640	6,181,092	6,792,074	6,535,468	5,149,626
Capital grants and contributions	57,828,290	65,836,704	51,553,892	37,607,084	43,812,610	45,269,891	82,903,904	45,854,066	49,493,379
Total governmental activities program revenues	97,734,267	108,715,049	84,045,379	66,397,370	73,690,464	72,453,741	109,346,955	69,444,524	71,020,356

CITY OF FARGO, NORTH DAKOTA
CHANGES IN NET ASSETS (CONTINUED)
LAST NINE FISCAL YEARS
(accrual basis of accounting)
(UNAUDITED)

	2010	2009	2008	2007	2006	2005	2004	2003	2002
Business-type activities:									
Charges for services:									
Airport	6,042,021	5,822,644	5,622,701	5,274,194	5,295,396	4,856,814	5,883,466	4,022,247	3,884,428
Water	17,307,253	17,695,424	17,422,765	16,894,612	16,434,832	14,331,669	13,194,829	13,418,217	12,903,193
Wastewater	10,321,247	10,340,200	9,949,467	9,226,721	8,479,324	7,467,026	6,783,272	6,364,407	5,896,967
Storm sewer	1,485,138	1,546,291	1,479,912	1,457,069	1,434,027	1,406,773	1,383,758	1,361,243	1,323,138
Solid waste	9,990,271	9,881,695	10,428,390	9,702,453	8,765,444	7,920,611	7,646,232	6,730,407	6,422,371
Fargodome	5,305,298	4,756,694	4,312,703	4,539,268	3,836,200	3,795,488	4,033,259	3,652,789	3,483,479
Other activities	3,423,829	1,735,879	1,659,185	1,556,522	1,516,823	1,475,820	1,447,868	1,044,602	724,531
Operating grants and contributions	-	-	-	20,000	8,818	4,432	14,959	1,786,605	16,855
Capital grants and contributions	4,157,791	9,095,212	26,965,424	19,540,506	1,849,235	2,116,326	13,384,393	4,080,870	859,744
Total business-type activities program revenues	58,032,848	60,874,039	77,840,547	68,211,345	47,620,099	43,374,959	53,772,036	42,461,387	35,514,706
Total primary government program revenues	\$ 155,767,115	\$ 169,589,088	\$ 161,885,926	\$ 134,608,715	\$ 121,310,563	\$ 115,828,700	\$ 163,118,991	\$ 111,905,911	\$ 106,535,062
NET (EXPENSE) REVENUE									
Governmental activities	\$ (48,581,362)	\$ (41,877,843)	\$ (58,902,758)	\$ (59,635,882)	\$ (28,743,553)	\$ (19,896,132)	\$ 19,455,345	\$ (14,497,959)	\$ (2,138,973)
Business-type activities	6,009,412	14,250,178	32,183,019	24,744,897	4,271,437	982,230	12,147,662	3,057,896	(3,316,140)
Total primary government net expense	\$ (42,571,950)	\$ (27,627,665)	\$ (26,719,739)	\$ (34,890,985)	\$ (24,472,116)	\$ (18,913,902)	\$ 31,603,007	\$ (11,440,063)	\$ (5,455,113)
GENERAL REVENUES AND OTHER									
CHANGES IN NET ASSETS									
Governmental activities:									
Taxes									
Property taxes	\$ 19,180,738	\$ 18,312,912	\$ 17,319,289	\$ 16,200,629	\$ 15,056,935	\$ 13,745,240	\$ 12,987,009	\$ 12,159,300	\$ 11,300,324
Sales taxes	40,435,541	29,243,136	10,364,101	10,376,182	14,462,645	17,070,962	8,093,103	7,502,871	5,647,132
Gross business receipts taxes	4,146,643	4,134,001	4,487,665	4,171,392	3,977,283	3,818,097	3,613,503	3,508,103	3,254,194
Other taxes	5,031,204	4,727,168	4,639,532	4,458,276	4,118,851	5,357,520	4,514,068	3,495,352	3,420,112
Unrestricted intergovernmental	3,830,789	3,296,682	3,403,887	2,970,994	2,619,532	2,434,789	2,282,028	2,287,294	2,057,702
Unrestricted investment earnings	3,014,501	3,440,226	4,889,864	5,833,229	5,559,410	3,629,600	4,366,395	3,539,110	3,571,750
Miscellaneous	405,694	(85,941)	286,695	254,248	222,665	105,948	283,471	172,685	495,679
Transfers	(35,488,049)	(25,763,467)	13,721,027	12,799,961	(893,663)	(162,689)	(2,861,526)	(4,229,462)	(12,495,342)
Total governmental activities	40,557,061	37,304,717	59,112,060	57,064,911	45,123,658	45,999,467	33,278,051	28,435,253	17,251,551
Business-type activities:									
Property taxes	601,556	579,513	556,329	515,932	459,010	420,714	395,855	374,350	349,682
Sales taxes	-	-	10,364,101	10,271,895	9,696,521	8,825,107	8,092,719	7,502,871	9,212,240
Unrestricted investment earnings	3,942,511	3,601,388	(3,064,009)	2,067,151	2,543,953	1,423,862	931,823	1,165,179	1,511,876
Miscellaneous	1,408,629	1,172,864	1,040,667	426,700	30,831	7,284	38,916	117,522	676
Transfers	35,488,049	25,763,467	(13,721,027)	(12,799,961)	893,663	162,689	2,861,526	4,229,462	12,495,342
Total business-type activities	41,440,745	31,117,232	(4,823,939)	481,717	13,623,978	10,839,656	12,320,839	13,389,384	23,569,816
Total primary government	\$ 81,997,806	\$ 68,421,949	\$ 54,288,121	\$ 57,546,628	\$ 58,747,636	\$ 56,839,123	\$ 45,598,890	\$ 41,824,637	\$ 40,821,367
CHANGE IN NET ASSETS									
Governmental activities	\$ (8,024,301)	\$ (4,573,126)	\$ 209,302	\$ (2,570,971)	\$ 16,380,105	\$ 26,103,335	\$ 52,733,396	\$ 13,937,294	\$ 15,112,578
Business-type activities	47,450,157	45,367,410	27,359,080	25,226,614	17,895,415	11,821,886	24,468,501	16,447,280	20,253,676
Total primary government	\$ 39,425,856	\$ 40,794,284	\$ 27,568,382	\$ 22,655,643	\$ 34,275,520	\$ 37,925,221	\$ 77,201,897	\$ 30,384,574	\$ 35,366,254

CITY OF FARGO, NORTH DAKOTA
FUND BALANCES - GOVERNMENTAL FUNDS
LAST TEN FISCAL YEARS
(modified accrual basis of accounting)
(UNAUDITED)

	2010	2009	2008	2007	2006	2005	2004	2003	2002	2001
General fund										
Reserved	\$ 2,851,707	\$ 2,764,013	\$ 2,276,501	\$ 1,731,044	\$ 3,044,227	\$ 3,104,257	\$ 2,134,303	\$ 2,143,474	\$ 1,856,513	\$ 2,011,670
Unreserved	19,629,816	17,564,092	15,273,881	14,115,241	11,634,215	10,760,730	12,057,374	12,121,346	11,235,924	8,696,994
Total general fund	\$22,481,523	\$ 20,328,105	\$ 17,550,382	\$ 15,846,285	\$ 14,678,442	\$ 13,864,987	\$ 14,191,677	\$ 14,264,820	\$ 13,092,437	\$ 10,708,664
All other governmental funds										
Reserved	\$ 68,563,005	\$ 58,095,953	\$ 46,730,034	\$ 66,757,669	\$ 68,160,369	\$ 70,253,057	\$ 53,074,745	\$ 38,760,464	\$ 36,640,140	\$ 29,921,556
Unreserved, reported in:										
Special revenue funds	3,373,748	3,118,470	5,122,076	6,185,099	6,625,055	5,080,365	3,693,208	4,397,051	5,622,916	4,382,764
Capital projects funds	(47,781,251)	(37,522,477)	(51,656,261)	(32,643,415)	(20,367,422)	(13,808,618)	(33,423,577)	(54,279,243)	(46,835,176)	(20,096,514)
Total all other governmental funds	\$24,155,502	\$ 23,691,946	\$ 195,849	\$ 40,299,353	\$ 54,418,002	\$ 61,524,804	\$ 23,344,376	\$ (11,121,728)	\$ (4,572,120)	\$ 14,207,806

CITY OF FARGO, NORTH DAKOTA
CHANGES IN FUND BALANCES - GOVERNMENTAL FUNDS
LAST TEN FISCAL YEARS
(modified accrual basis of accounting)
(UNAUDITED)

	2010	2009	2008	2007	2006	2005	2004	2003	2002	2001
REVENUES										
Taxes	\$ 67,815,586	\$ 56,327,777	\$ 35,181,056	\$ 33,706,700	\$ 36,013,536	\$ 36,952,573	\$ 26,893,262	\$ 25,317,570	\$ 22,267,743	\$ 18,836,847
Special assessments	27,610,188	20,762,524	20,126,159	19,223,615	22,013,443	19,614,519	23,803,914	20,013,724	22,818,722	16,410,741
Licenses and permits	2,605,989	2,757,375	2,975,291	2,999,236	3,181,293	3,015,399	2,232,914	2,044,997	2,207,119	1,927,852
Intergovernmental revenues	32,971,141	42,922,740	24,313,438	22,063,937	21,390,890	25,181,910	43,375,117	22,513,535	25,987,566	16,068,208
Charges for services	18,567,755	15,419,727	14,336,047	11,837,766	11,701,799	10,934,941	10,172,365	10,713,713	11,326,759	8,458,220
Fines and forfeits	2,324,097	2,234,844	2,611,087	2,837,597	3,046,432	2,594,234	2,478,961	2,230,238	2,115,606	2,337,592
Investment income	3,075,599	3,623,716	4,691,496	5,194,334	5,186,857	3,431,234	4,231,499	3,487,552	3,644,707	3,267,969
Miscellaneous revenues	4,224,204	3,525,198	4,011,940	6,935,170	5,947,492	4,574,411	5,279,642	2,131,507	1,339,444	1,655,690
Total revenues	159,194,559	147,573,901	108,246,514	104,798,355	108,481,742	106,299,221	118,467,674	88,452,836	91,707,666	68,963,119
EXPENDITURES										
Current:										
General government	12,140,948	11,709,061	10,526,038	9,702,005	9,226,175	9,280,268	8,446,137	8,381,895	7,218,408	6,488,987
Public safety	28,244,521	28,942,982	25,994,545	23,742,908	23,103,579	22,206,681	19,928,108	18,813,838	17,346,320	15,632,910
Public works	48,548,373	53,311,460	58,698,000	43,450,218	28,212,265	21,431,342	23,856,095	20,398,450	17,761,150	5,454,793
Public health & welfare	9,021,360	8,557,497	7,711,261	7,348,459	6,770,330	6,602,690	6,177,911	5,970,671	5,131,529	4,305,222
Recreation & culture	5,484,437	6,679,735	5,252,313	5,004,157	4,762,248	3,871,160	3,577,861	3,559,333	3,448,221	3,017,208
Urban redevelopment	4,924,389	5,221,218	4,803,641	5,207,247	5,324,037	5,223,921	5,928,058	4,155,060	1,615,161	2,171,245
Public transportation	6,171,266	6,465,418	5,620,779	4,747,917	4,378,471	3,249,197	3,382,039	3,666,427	3,202,562	2,467,382
General support	1,580,065	1,278,791	1,251,485	1,328,686	1,301,094	1,110,807	1,125,937	976,323	1,291,849	1,093,397
Unallocated	-	-	-	-	-	-	-	-	-	-
Capital outlay	63,602,202	71,582,986	34,422,248	17,638,072	17,896,822	24,825,723	41,254,168	30,304,606	37,387,171	39,309,700
Intergovernmental	-	-	-	689,928	-	-	185,185	333,333	333,333	148,148
Debt service										
Principal	26,718,154	21,886,706	22,828,713	18,676,869	21,984,363	12,880,075	13,365,213	17,940,008	11,193,380	9,875,489
Interest and fiscal charges	13,425,675	11,724,171	10,311,530	10,438,935	10,240,691	9,394,614	7,950,174	7,627,464	7,099,393	7,804,266
Total expenditures	219,861,390	227,360,025	187,420,553	147,975,401	133,200,075	120,076,478	135,176,886	122,127,408	113,028,477	97,768,747
Excess of revenues over (under) expenditures	(60,666,831)	(79,786,124)	(79,174,039)	(43,177,046)	(24,718,333)	(13,777,257)	(16,709,212)	(33,674,572)	(21,320,811)	(28,805,628)
OTHER FINANCING SOURCES (USES)										
Transfers in	48,822,131	25,596,564	27,235,645	24,845,543	27,168,658	28,765,409	21,622,599	18,901,062	16,170,025	16,921,872
Transfers out	(38,375,335)	(17,720,667)	(13,514,618)	(12,045,582)	(28,062,321)	(28,928,098)	(24,484,125)	(23,260,524)	(28,665,367)	(9,251,244)
Lease proceeds	-	-	-	-	-	380,000	338,062	-	-	368,000
Loans issued	21,367,174	33,387,993	8,832,714	2,946,737	3,825,000	1,700,000	2,003,000	1,410,812	-	-
Bonds issued	31,070,000	68,090,000	26,285,000	14,445,000	26,275,000	52,245,000	56,225,402	34,220,763	17,420,000	25,397,810
Bond premium	439,282	1,616,054	5,891	34,542	36,028	1,553,908	-	-	-	-
Bond proceeds used for refunding	-	-	-	-	(10,785,000)	(4,010,000)	(4,550,000)	(2,880,000)	-	-
Bond discount	(39,447)	-	-	-	(32,379)	(75,224)	(52,765)	(94,766)	-	-
Other financing sources - proceeds of refunding bond	-	13,190,000	-	-	-	-	-	-	-	-
Other financing uses - payment to bond escrow agent	-	(4,910,000)	(8,070,000)	-	-	-	-	-	-	-
Other financing uses - debt service - principal	-	(13,190,000)	-	-	-	-	-	-	-	-
Total other financing sources (uses)	63,283,805	106,059,944	40,774,632	30,226,240	18,424,986	51,630,995	51,102,173	28,297,347	4,924,658	33,436,438
Net change in fund balances	\$ 2,616,974	\$ 26,273,820	\$ (38,399,407)	\$ (12,950,806)	\$ (6,293,347)	\$ 37,853,738	\$ 34,392,961	\$ (5,377,225)	\$ (16,396,153)	\$ 4,630,810
Debt service as a percentage of noncapital expenditures	25.7%	21.6%	21.7%	22.3%	27.9%	23.4%	22.7%	27.8%	24.2%	30.2%

CITY OF FARGO, NORTH DAKOTA
PROGRAM REVENUES BY FUNCTION/PROGRAM
LAST NINE FISCAL YEARS
(accrual basis of accounting)
(UNAUDITED)

	2010	2009	2008	2007	2006	2005	2004	2003	2002
Function/Programs									
Governmental Activities:									
General government	\$ 3,085,939	\$ 2,628,121	\$ 2,512,175	\$ 2,641,964	\$ 2,830,186	\$ 2,651,435	\$ 2,243,740	\$ 2,164,496	\$ 2,325,679
Public safety	8,113,499	7,817,668	8,561,356	5,947,115	7,123,477	6,775,378	5,035,386	4,660,821	4,708,181
Public works	67,011,130	78,101,673	56,788,795	38,739,772	44,547,243	48,282,625	87,160,678	50,424,935	54,421,263
Public health & welfare	5,912,211	5,436,794	4,963,580	5,162,518	4,353,897	4,272,555	4,076,760	3,947,922	3,304,246
Recreation & culture	941,916	913,567	864,413	2,980,784	1,101,982	688,406	707,708	665,126	1,005,528
Urban redevelopment	4,529,526	5,425,772	4,732,935	5,089,096	5,923,382	5,228,816	5,747,870	3,542,117	1,584,294
Transportation	8,140,046	8,391,454	5,622,125	5,836,121	7,810,297	4,554,526	4,374,813	4,039,107	3,671,165
Total governmental activities	<u>97,734,267</u>	<u>108,715,049</u>	<u>84,045,379</u>	<u>66,397,370</u>	<u>73,690,464</u>	<u>72,453,741</u>	<u>109,346,955</u>	<u>69,444,524</u>	<u>71,020,356</u>
Business-type activities:									
Municipal airport authority	10,025,213	6,375,330	10,023,033	9,494,525	7,147,631	6,835,353	19,234,245	5,942,501	4,584,042
Water	17,307,253	17,867,299	27,051,914	20,469,187	16,434,832	14,331,669	13,206,698	13,420,888	12,903,193
Wastewater	10,328,132	18,708,251	13,730,007	12,746,076	8,479,324	7,467,026	6,783,272	6,364,407	5,896,967
Storm sewer	1,485,138	1,546,291	10,628,965	9,683,314	1,434,027	1,406,773	1,383,758	1,361,243	1,390,687
Solid waste	10,009,798	9,884,295	10,428,390	9,722,453	8,765,444	7,920,611	7,646,232	6,730,407	6,434,871
FargoDome	5,305,298	4,756,694	4,312,703	4,539,268	3,836,200	3,933,275	4,066,873	7,594,825	3,576,060
Southeast Cass	50,686	64,174	61,159	60,261	49,002	43,787	43,378	49,860	44,048
Vector control	621,293	630,597	602,787	591,349	579,482	570,960	561,377	167,385	-
Street lighting	1,744,395	-	-	-	-	-	-	-	-
Forestry	1,155,642	1,041,108	1,001,589	904,912	894,157	865,505	846,203	829,871	684,838
Total business-type activities	<u>58,032,848</u>	<u>60,874,039</u>	<u>77,840,547</u>	<u>68,211,345</u>	<u>47,620,099</u>	<u>43,374,959</u>	<u>53,772,036</u>	<u>42,461,387</u>	<u>35,514,706</u>
Total	<u>\$ 155,767,115</u>	<u>\$ 169,589,088</u>	<u>\$ 161,885,926</u>	<u>\$ 134,608,715</u>	<u>\$ 121,310,563</u>	<u>\$ 115,828,700</u>	<u>\$ 163,118,991</u>	<u>\$ 111,905,911</u>	<u>\$ 106,535,062</u>

CITY OF FARGO, NORTH DAKOTA
TAX REVENUES BY SOURCE, GOVERNMENTAL FUNDS
LAST TEN FISCAL YEARS
(modified accrual basis of accounting)
(UNAUDITED)

Year	Property Tax	Business Tax	Sales Tax	Lodging Tax	Other	Totals
2010	\$ 19,202,277	\$ 4,146,643	\$ 40,435,541	\$ 1,775,404	\$ 2,255,721	\$ 67,815,586
2009	19,005,572	4,882,230	29,243,136	1,675,939	1,520,900	56,327,777
2008	17,269,481	4,487,665	10,364,101	1,625,484	1,434,325	35,181,056
2007	16,228,666	4,171,392	10,376,182	1,480,061	1,450,399	33,706,700
2006	15,083,904	3,977,283	14,462,645	1,325,969	1,163,735	36,013,536
2005	13,764,582	3,818,097	17,070,962	1,150,027	1,148,905	36,952,573
2004	12,966,760	3,613,502	8,092,719	1,147,669	1,072,612	26,893,262
2003	12,174,473	3,508,104	7,502,871	1,060,469	1,071,653	25,317,570
2002	11,345,467	3,254,194	5,647,132	1,095,459	925,491	22,267,743
2001	10,362,553	3,392,296	3,411,490	992,724	677,784	18,836,847

**CITY OF FARGO, NORTH DAKOTA
 MARKET, ASSESSED AND TAXABLE VALUE OF TAXABLE PROPERTY
 LAST TEN FISCAL YEARS
 (UNAUDITED)**

Fiscal Year	Residential	Agriculture	Commercial	Railroad	Other Utilities	Less: Incremental Value	Estimated (True & Full) Market Value	Assessed Value (1)	Taxable Value (2)	Total Direct Tax Rate
2010	\$ 3,706,864,247	\$ 3,057,450	\$ 3,143,371,510	\$ 4,520,080	\$ 76,881,920	\$ (95,175,987)	\$ 6,839,519,220	\$ 3,419,759,611	\$ 323,469,153	58.25
2009	3,639,440,534	3,676,200	3,018,701,210	4,000,320	72,118,460	(87,529,775)	6,650,406,949	3,325,203,475	314,345,150	58.25
2008	3,511,778,184	3,348,300	2,893,353,170	3,174,420	61,661,400	(70,319,600)	6,402,995,874	3,201,497,937	302,612,498	58.25
2007	3,374,957,014	3,528,300	2,770,278,500	2,714,400	67,148,160	(57,368,400)	6,161,257,974	3,080,628,987	291,211,070	58.25
2006	3,157,577,284	2,077,200	2,520,943,100	2,605,440	76,647,320	(73,583,100)	5,686,267,244	2,843,133,622	268,544,513	57.25
2005	2,883,661,866	2,265,400	2,281,314,500	2,446,720	60,906,740	(59,763,220)	5,170,832,006	2,585,416,003	244,141,153	59.25
2004	2,619,521,204	2,039,100	2,142,099,848	2,536,660	56,987,820	(50,845,720)	4,772,338,912	2,386,169,456	225,535,096	58.73
2003	2,339,918,260	2,644,800	2,041,405,900	2,667,120	53,459,480	(44,674,724)	4,395,420,836	2,197,710,418	208,083,503	60.24
2002	2,190,209,144	1,771,200	1,906,306,480	2,520,920	51,420,640	(37,968,880)	4,114,259,504	2,057,129,752	194,773,430	60.30
2001	2,019,290,056	2,085,400	1,833,502,200	2,475,460	52,044,520	(30,766,180)	3,878,631,456	1,939,315,728	183,845,794	60.13

- (1) Assessed value is 50% of market value
- (2) Taxable Value is determined as follows:
 - Commercial property - 10% of assessed value
 - Agricultural property - 10% of assessed value
 - Residential property - 9% of assessed value

Source: County Auditors Office

Required NRMSIR continuing disclosure for CUSIPs: 30747M, 30747PA, 30748T, 307490E

**CITY OF FARGO, NORTH DAKOTA
PROPERTY TAX RATES - DIRECT AND OVERLAPPING GOVERNMENTS
LAST TEN FISCAL YEARS
(UNAUDITED)**

MILL LEVY RATES *

Levy Year	Collect Year	CITY OF FARGO					OTHER TAXING ENTITIES							TOTALS BY SCHOOL DISTRICT			
		General Revenue	Airport	City Share of Special Assessments **	Special Levies	Total City of Fargo Mills	School District #1	School District #2	School District #6	Park District	Cass County	State	Soil Conservation District	Flood Control	School District #1	School District #2	School District #6
2010	2011	53.32	2.00	2.83	0.10	58.25	221.59	191.29	170.64	31.39	65.00	1.00	0.90	7.00	385.13	354.83	334.18
2009	2010	53.32	2.00	2.83	0.10	58.25	221.77	132.35	170.64	31.45	62.00	1.00	0.45	6.00	380.92	291.50	329.79
2008	2009	53.32	2.00	2.83	0.10	58.25	296.77	194.72	245.64	31.56	62.00	1.00	0.45	5.40	455.43	353.38	404.30
2007	2008	53.32	2.00	2.83	0.10	58.25	299.99	187.48	248.76	31.85	62.00	1.00	0.35	5.60	459.04	346.53	407.81
2006	2007	52.32	2.00	2.83	0.10	57.25	309.02	-	254.02	32.07	62.00	1.00	0.41	5.50	467.25	-	412.25
2005	2006	54.15	2.00	3.00	0.10	59.25	318.62	-	254.02	32.58	63.00	1.00	0.31	6.00	480.76	-	416.16
2004	2005	53.67	1.99	2.97	0.10	58.73	319.55	-	254.02	32.46	66.00	1.00	0.32	6.00	484.06	-	418.53
2003	2004	55.15	2.00	2.99	0.10	60.24	320.20	-	254.02	32.73	66.00	1.00	0.41	6.00	486.58	-	420.40
2002	2003	55.21	2.00	2.99	0.10	60.30	323.84	-	254.02	32.87	65.80	1.00	0.21	6.00	490.02	-	420.20
2001	2002	55.06	1.99	2.98	0.10	60.13	327.88	-	249.02	32.76	63.44	1.00	0.23	6.00	491.44	-	412.58

* per \$1,000 of taxable value

** City share of special assessments is not subject to the city ordinance imposed mill levy limitation of 64 mills

Source: Cass County

Required NRMSIR continuing disclosure for CUSIPs: 30747M, 30747PA, 30748T, 307490E

**CITY OF FARGO, NORTH DAKOTA
PRINCIPAL PROPERTY TAXPAYERS
2010 AND NINE YEARS AGO
(UNAUDITED)**

Taxpayer	2010			2001		
	Assessed Valuation	Rank	% of total assessed valuation	Assessed Valuation	Rank	% of total assessed valuation
INREIT Properties	53,679,450	1	1.57	-	-	-
West Acres Development Company	\$ 41,921,000	2	1.23	\$ 31,192,950	1	1.61
Matrix Properties	25,660,650	3	0.75	13,609,450	5	0.70
Sanford	24,668,000	4	0.72	-	-	-
Osgood Investments	21,019,350	5	0.61	-	-	-
R & B Development	19,493,600	6	0.57	-	-	-
Innovis Health	18,200,650	7	0.53	27,800,000	2	1.43
RCV Ltd partnership/Van Raden	16,019,900	8	0.47	-	-	-
JPR Investments LLC	15,369,600	9	0.45	-	-	-
Wal-Mart Real Estate	14,878,250	10	0.44	-	-	-
Paracelsus Healthcare Corp.	-	-	-	21,641,000	3	1.12
Meritcare	-	-	-	18,579,500	4	0.96
Blue Cross/Blue Shield	-	-	-	12,875,500	6	0.66
Medical Properties	-	-	-	10,483,750	7	0.54
Case Equipment	-	-	-	8,854,700	8	0.46
Anda Construction Co	-	-	-	8,850,200	9	0.46
Holiday Inn	-	-	-	7,442,500	10	0.38
Total attributable to top taxpayers	250,910,450		7.34	161,329,550		8.32
Total of all other properties	3,168,849,161		92.66	1,777,986,178		91.68
	\$ 3,419,759,611		100.00	\$ 1,939,315,728		100.00

Source: City of Fargo Assessors Office, Cass County Auditors Office

Required NRMSIR continuing disclosure for CUSIPs: 30747M, 30747PA, 307490E, 30748T

**CITY OF FARGO, NORTH DAKOTA
PROPERTY TAX LEVIES AND COLLECTIONS
LAST TEN FISCAL YEARS
(UNAUDITED)**

Fiscal Year	Taxes levied for the Fiscal Year	Collected within the Fiscal Year of the Levy		Collections in Subsequent Years	Total Collections to Date	
		Amount	Percentage of Levy		Amount	Percentage of Levy
2010	\$ 21,183,386	\$ 5,497,427	25.95%	\$ -	\$ 5,497,427	25.95%
2009	20,324,344	5,448,392	26.81%	13,719,579	19,167,971	94.31%
2008	19,234,312	5,462,763	28.40%	12,815,610	18,278,373	95.03%
2007	18,272,888	5,351,247	29.29%	12,065,538	17,416,785	95.31%
2006	17,053,222	4,417,046	25.90%	11,549,040	15,966,086	93.63%
2005	15,888,706	4,463,294	28.09%	10,690,840	15,154,134	95.38%
2004	14,483,164	3,967,652	27.39%	9,881,152	13,848,804	95.62%
2003	13,639,256	3,271,021	23.98%	9,723,736	12,994,757	95.27%
2002	12,696,788	2,589,541	20.40%	9,570,262	12,159,803	95.77%
2001	11,830,858	2,355,337	19.91%	8,964,093	11,319,430	95.68%

Property taxes are collectable at the taxpayer's option under two plans: 1) taxes paid in full by February 15 of the collection year receive a 5% discount or 2) taxes paid in two installments dues by March 1 and due by October 15. Penalties are levied on the following schedule:

<u>Delinquent Time Period</u>	<u>Penalty</u>
Mar 2 - Apr 30	3%
May 2 - Jun 30	an additional 3%
Jul 2 - Sept 30	an additional 3%
Oct 16 - Dec 31	an additional 3%
Jan 1	12% annual rate

The second installment becomes delinquent on October 16 at which time a 6% penalty is assessed. On January 1 the taxes are sold to the County Auditor at which time 12% interest penalty is compounded daily. After five years the property is offered at tax sale at a fair market valuation.

Source: County Auditors Office

Required NRMSIR continuing disclosure for CUSIPs: 30747M, 30747PA, 30748T, 307490E

**CITY OF FARGO, NORTH DAKOTA
SUMMARY OF BUILDING PERMITS ISSUED
LAST TEN FISCAL YEARS
(UNAUDITED)**

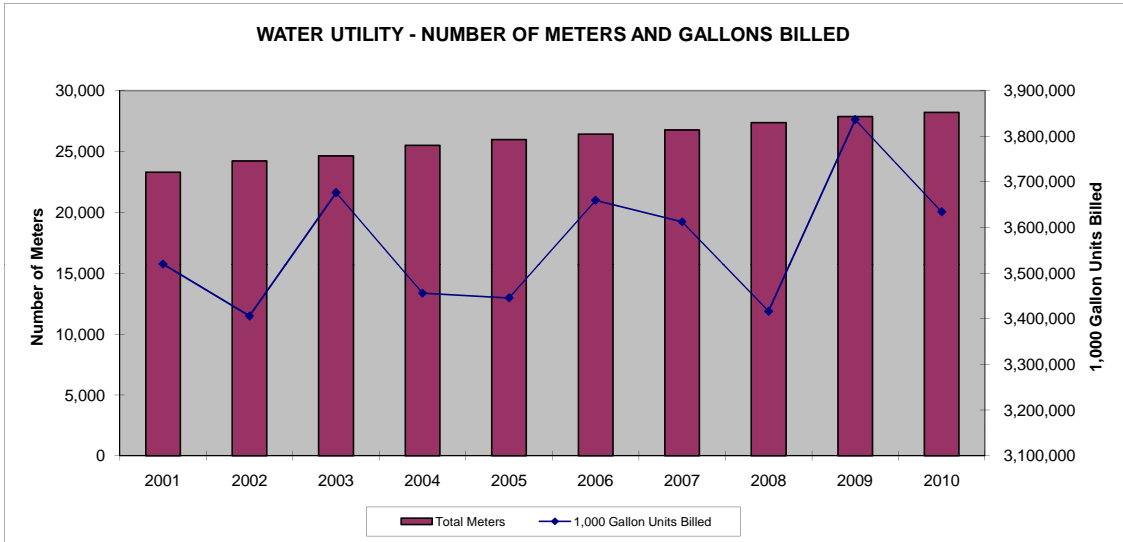
Fiscal Year	Residential		Commercial		Multiple Dwelling		Other		Total	
	No.	Value	No.	Value	No.	Value	No.	Value	No.	Value
2010	213	\$ 37,978,700	29	\$ 35,164,896	12	\$ 30,992,090	2,016	\$ 116,745,415	2,270	\$ 220,881,101
2009	232	36,772,400	40	38,154,470	10	33,230,000	1,937	164,458,121	2,219	272,614,991
2008	221	37,800,540	60	102,503,465	10	30,274,056	2,181	130,461,240	2,472	301,039,301
2007	292	53,726,408	61	45,119,186	13	39,751,870	2,063	126,599,975	2,429	265,197,439
2006	282	54,576,510	75	79,205,067	12	34,376,000	2,143	171,302,755	2,512	339,460,332
2005	338	60,267,963	62	82,958,300	10	28,640,980	1,944	124,840,484	2,354	296,707,727
2004	270	42,494,393	62	39,291,330	27	29,870,000	2,000	126,726,026	2,359	238,381,749
2003	203	31,394,220	55	51,564,495	44	26,457,200	1,993	97,415,757	2,295	206,831,672
2002	220	31,714,963	38	24,091,700	38	36,381,700	1,789	106,816,544	2,085	199,004,907
2001	159	24,606,400	71	49,970,580	31	27,412,949	1,850	70,783,725	2,111	172,773,654

Source: City of Fargo Building Inspector

Required NRMSIR continuing disclosure for CUSIPs: 30747M, 307531, 307490

**CITY OF FARGO, NORTH DAKOTA
WATER UTILITY BILLED CONSUMPTION
LAST TEN FISCAL YEARS
(UNAUDITED)**

	2001	2002	2003	2004	2005	2006	2007	2008	2009	2010
Residential Customers (1,000 Gallon Units)	1,369,840	1,331,555	1,391,503	1,336,724	1,318,301	1,431,399	1,372,331	1,298,233	1,318,338	1,259,759
Commercial Customers (1,000 Gallon Units)	2,150,246	2,074,701	2,285,228	2,119,584	2,127,720	2,228,497	2,240,250	2,118,567	2,517,916	2,374,922
Total 1,000 Gallon Units	3,520,086	3,406,256	3,676,731	3,456,308	3,446,021	3,659,896	3,612,581	3,416,800	3,836,254	3,634,681
Total Number of Meters	23,309	24,208	24,641	25,509	25,971	26,440	26,760	27,388	27,882	28,209



Source: City Auditor's Office

Required NRMSIR continuing disclosure for CUSIPs: 307531, 30753

**CITY OF FARGO, NORTH DAKOTA
WATER UTILITY - MAJOR CUSTOMERS
DECEMBER 31, 2010
(UNAUDITED)**

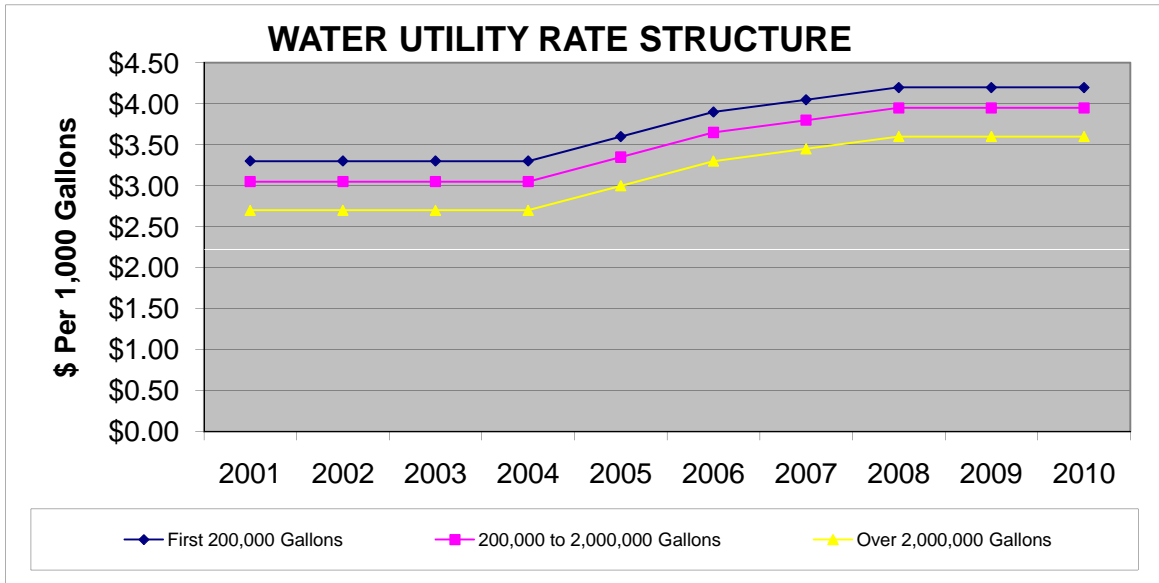
<u>Customer</u>	1,000 Gallon Units
North Dakota State University	203,484
Sanford Health	90,332
Cass Rural Water District	65,157
Cass Clay Creamery	45,522
Holiday Inn	28,296
William Block	24,726
Valley Rental	24,206
Buena Vista Mobile Homes	22,098
Ameripride	21,515
Fargo Park Board	20,067
Innovis	19,872
Pepsi Cola Bottling Co	17,084
Anda Contrustruction	15,084
Case New Holland	14,446
Park Avenue Apartments	<u>13,860</u>
Total Attributable to Major Customers	<u><u>625,749</u></u>
Total Billed Consumption	<u><u>3,634,681</u></u>
Percentage Attributable to to Major Customers	<u><u>17.2%</u></u>

Source: City Auditor's Office

Required NRMSIR continuing disclosure for CUSIPs: 307531, 30753

CITY OF FARGO, NORTH DAKOTA
WATER UTILITY RATE STRUCTURE (\$ PER 1,000 GALLONS)
LAST TEN FISCAL YEARS
(UNAUDITED)

	2001	2002	2003	2004	2005	2006	2007	2008	2009	2010
First 200,000 Gallons	\$3.30	\$3.30	\$3.30	\$3.30	\$3.60	\$3.90	\$4.05	\$4.20	\$4.20	\$4.20
200,000 Gallons to 2,000,000 Gallons	3.05	3.05	3.05	3.05	3.35	3.65	3.80	3.95	3.95	3.95
Over 2,000,000 Gallons	2.70	2.70	2.70	2.70	3.00	3.30	3.45	3.60	3.60	3.60

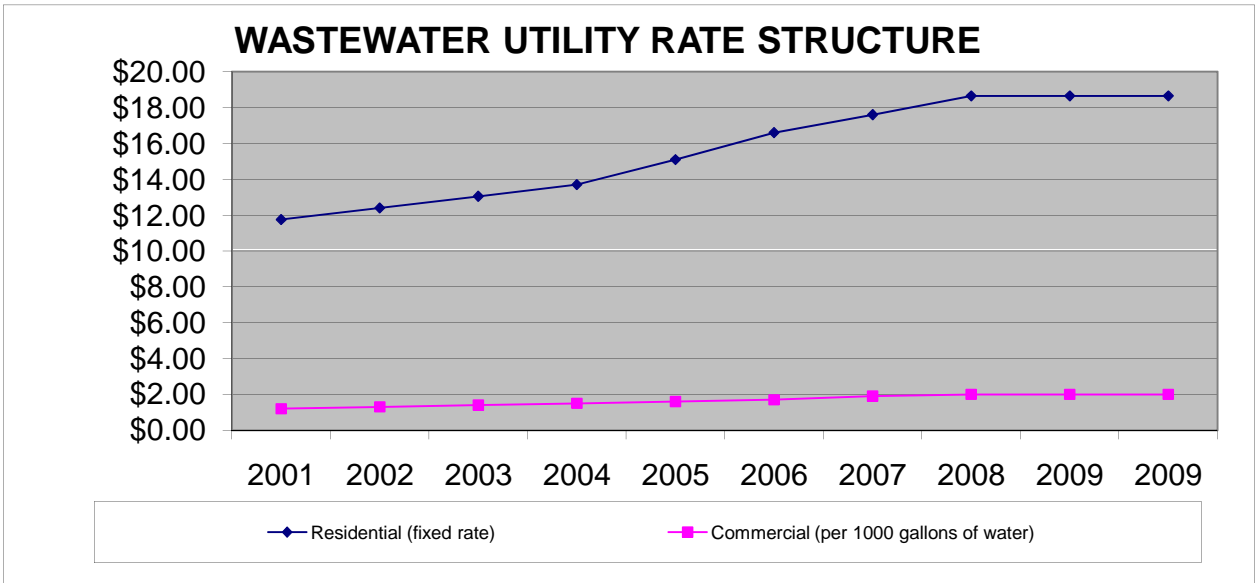


Source: City Auditor's Office

Required NRMSIR continuing disclosure for CUSIPs: 307531, 30753

**CITY OF FARGO, NORTH DAKOTA
WASTEWATER UTILITY RATE STRUCTURE (\$ PER 1,000 GALLONS)
LAST TEN FISCAL YEARS
(UNAUDITED)**

	2001	2002	2003	2004	2005	2006	2007	2008	2009	2009
Residential (fixed rate)	\$11.75	\$12.40	\$13.05	\$13.70	\$15.10	\$16.60	\$17.60	\$18.65	\$18.65	\$18.65
Commercial (per 1000 gallons)	1.20	1.30	1.40	1.50	1.60	1.70	1.90	2.00	2.00	2.00



Source: City Auditor's Office

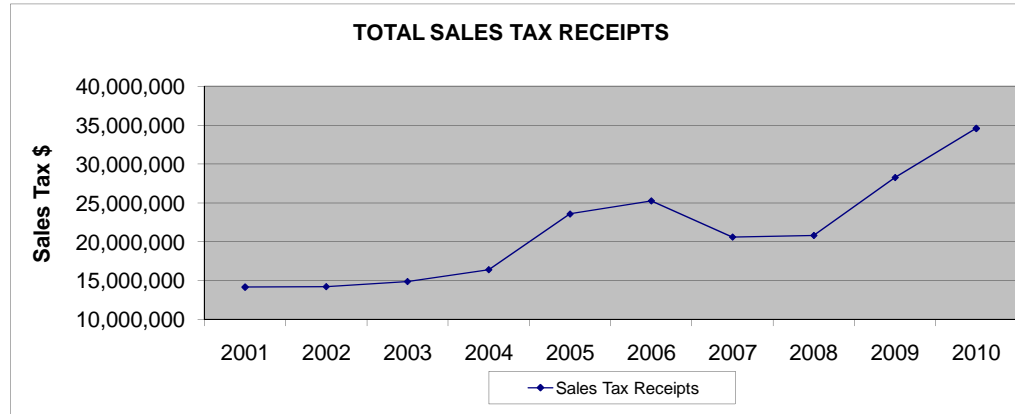
Required NRMSIR continuing disclosure for CUSIPs: 307531

**CITY OF FARGO, NORTH DAKOTA
SALES TAX RECEIPTS - CASH BASIS
LAST TEN FISCAL YEARS
(UNAUDITED)**

	2001	2002	2003	2004	2005	2006	2007	2008	2009	2010
Allocation of Receipts:										
FargoDome Enterprise Fund	\$ 7,080,766	\$ 7,109,996	\$ 7,445,545	\$ 8,208,798	\$ 8,510,011	\$ 9,408,632	\$ 10,256,127	\$ 10,414,568	\$ -	\$ -
To Street Construction (1)	(1,520,192)	-	-	-	-	-	-	-	-	-
Subtotal FargoDome	5,560,574	7,109,996	7,445,545	8,208,798	8,510,011	9,408,632	10,256,127	10,414,568	-	-
Water Utility Debt Service	3,540,383	2,336,259	-	-	-	-	-	-	-	-
Street Construction Fund (1)	-	-	-	-	-	-	-	-	-	-
From FargoDome	1,520,192	-	-	-	-	-	-	-	-	-
Subtotal Street Construction	1,520,192	-	-	-	-	-	-	-	-	-
Library Expansion Fund (3)	-	-	-	-	6,574,035	6,436,250	104,288	-	-	-
Sales Tax Bond Debt Service (2)	3,540,383	4,773,738	7,445,545	8,208,798	8,510,011	9,408,632	10,256,127	10,414,568	14,094,046	13,348,107
Public Utility Infrastructure (4)	-	-	-	-	-	-	-	-	14,179,416	13,106,476
Flood Control (5)	-	-	-	-	-	-	-	-	-	8,148,383
Total Sales Tax Receipts	\$ 14,161,532	\$ 14,219,993	\$ 14,891,090	\$ 16,417,596	\$ 23,594,057	\$ 25,253,514	\$ 20,616,542	\$ 20,829,136	\$ 28,273,462	\$ 34,602,966

Receipts are shown net of state administrative fee.

- (1) Beginning in 1996, ordinances were revised to allow the FargoDome to share excess sales tax with the Street Construction Fund.
- (2) Beginning in December 1999, 1/4 cent sales tax is received into the Sales Tax Bond Debt Service Fund instead of the Street Construction Fund, surplus receipts used for infrastructure projects
- (3) Beginning in 2005 a 1/2 cent sales tax was authorized until June 2006 for library expansion.
- (4) Beginning in 2009 a 1/2 cent sales tax was authorized through December 2028 for infrastructure funding related primarily to an approved utility infrastructure master plan
- (5) Beginning in 2010 a 1/2 cent sales tax was authorized through December 2029 for flood control projects



10 Largest Sales Tax Permit Holders

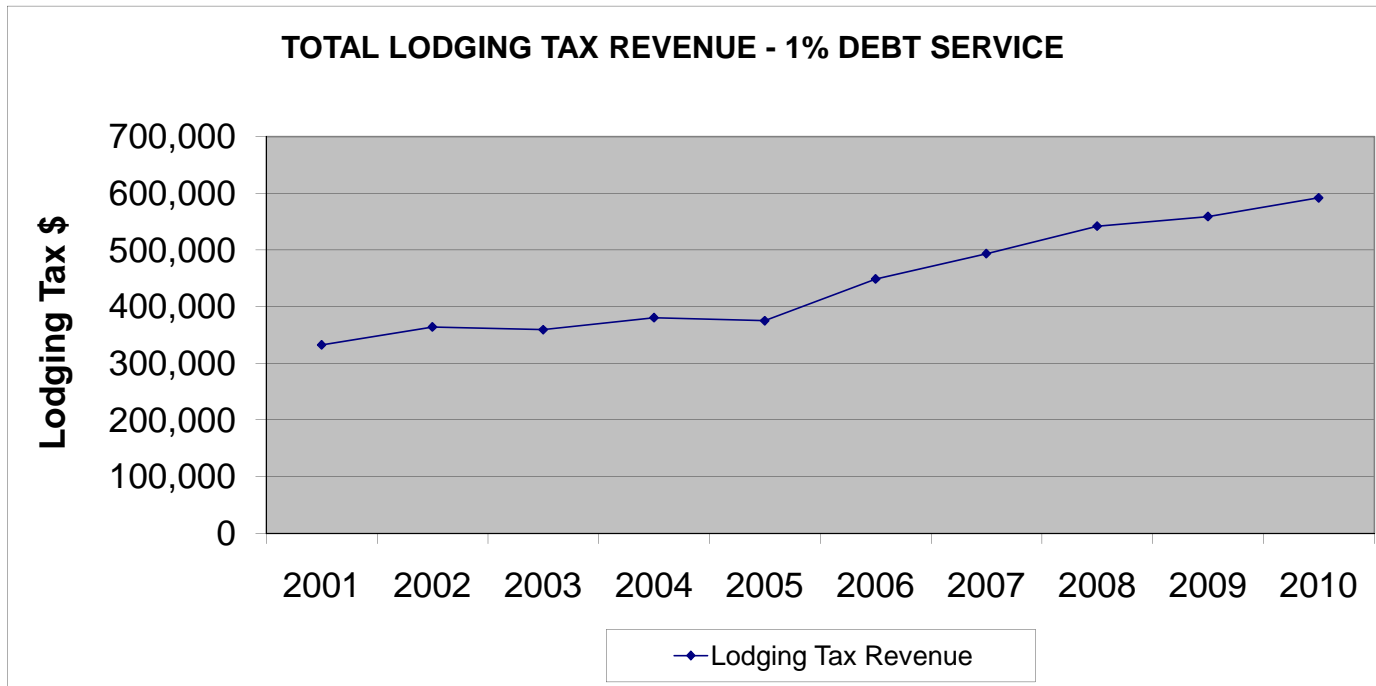
Any retailer in the State or North Dakota must obtain a State sales tax permit. The ten largest permit holders in the city for calendar year 2010, as prepared by the Office of the State Tax Commissioner, collected 19.85% of the Sales Tax collected in the City. In order to determine the ten largest permit holders, city businesses were sorted by annual taxable sales and purchases. For purposes of deriving this information, consolidated businesses and businesses not required to remit City sales tax have been excluded.

Source: City Auditors Office and Office of the ND State Tax Commissioner

Required NRMSIR continuing disclosure for CUSIPs: 307490, 30747M

**CITY OF FARGO, NORTH DAKOTA
 LODGING TAX REVENUE - 1% DEBT SERVICE
 LAST TEN FISCAL YEARS
 (UNAUDITED)**

	2001	2002	2003	2004	2005	2006	2007	2008	2009	2010
Lodging Tax Revenue - Debt Service	\$ 332,346	\$ 363,983	\$ 359,369	\$ 380,470	\$ 375,059	\$ 448,677	\$ 493,352	\$ 541,826	\$ 558,646	\$ 591,797



Source: City Auditors Office

**CITY OF FARGO, NORTH DAKOTA
PARKING FACILITY INFORMATION
(UNAUDITED)**

Designated Parking Facilities for Revenue Bond Repayment

The City currently owns and contracts for the management of a parking system consisting of both parking ramp structures and surface parking lots:

	<u># of Spaces</u>	<u># of Monthly Contracts</u>
Designated for Revenue Bond Repayment:		
Ramps:		
Island Park Ramp	377	262
Radisson Hotel	250	229
Ground Transportation Center	200	168
Surface Lots:		
Second Avenue	100	125
Elm Tree	65	20
Main Avenue	77	76
NP Avenue	141	80
4th St	174	174
Civic Center	100	41
3rd St	145	97
3rd Ave & 5th St.	40	43

Operation of the Parking Facilities

The City contracts with Parking Service, Inc. a North Dakota corporation, located in Fargo (the "Operator") for all services involved in the operation and maintenance of the Parking Facilities. The Operator is compensated on a fixed fee basis for such services, with the City bearing an obligation to reimburse the Operator for its out of pocket costs. The Operator also operated the three surface parking lots being acquired with proceeds of the Parking Bonds prior to their acquisition by the City.

Existing Rate Structure

The City has in place monthly and hourly rates for the Parking Facilities as follows:

	<u>2010</u>	<u>2011</u>	<u>Hourly</u>	<u>Daily Max</u>
Designated for Revenue Bond Repayment:				
Ramps:				
Island Park Ramp	\$50	\$52	\$1	\$5
Radisson Hotel	\$62	\$65	\$1.50	\$7.50
Ground Transportation Center	\$57	\$58	\$1.50	\$7.50
Surface Lots:				
Second Avenue	\$50	\$52	\$1	\$5
Elm Tree	\$62	\$65	\$1.50	\$7.50
Main Avenue	\$50	\$50	N/A	N/A
NP Avenue	\$50	\$52	\$1	\$5
4th St	\$50	\$50	\$1	\$5
Ground Transportation Center	\$57	\$58	N/A	N/A
Civic Center	\$50	\$50	\$1	\$5
3rd St	\$50	\$50	N/A	N/A
3rd Ave & 5th St.	\$62	\$65	N/A	N/A

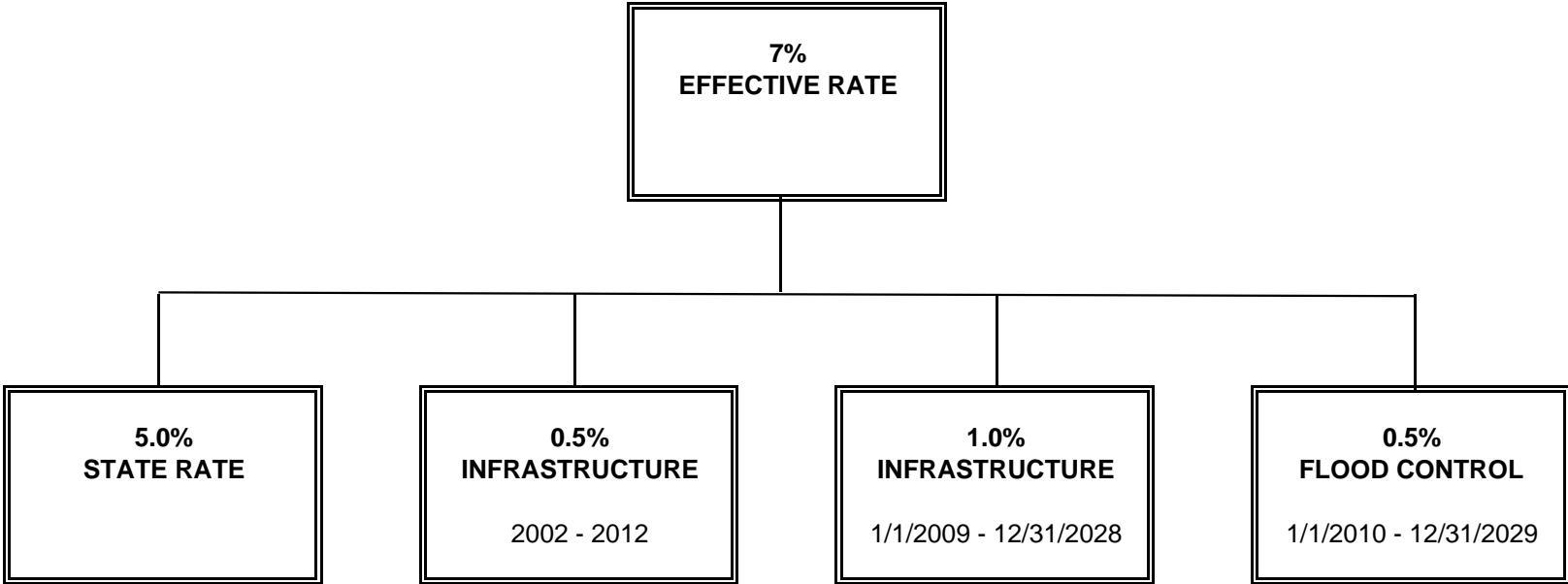
Financial Performance

The table below is a compilation of financial results from the designated parking facilities.

	<u>2010(2)</u>
Revenues	\$1,074,258
Expenditures	\$ 660,212
Net Revenues	\$ 414,046

(2) Revenues and Expenses do not include operating transfers made between funds.
Required NRMSIR continuing disclosure for CUSIP #30748L

**CITY OF FARGO, NORTH DAKOTA
SALES TAX MODEL
(UNAUDITED)**



**CITY OF FARGO, NORTH DAKOTA
RATIOS OF OUTSTANDING DEBT BY TYPE
LAST TEN FISCAL YEARS
(UNAUDITED)**

Fiscal Year	Governmental Activities						Business-Type Activities				Total Primary Government	Percentage of Personal Income (1)	Per Capita (2)
	Special Assessment Bonds	Other General Obligation Debt	Gross Revenue Debt	Sales Tax Bonds	Notes Payable	Capital Leases	Revenue Bonds	Notes Payable	Special Assessments	Capital Leases			
2010	\$ 238,133,281	\$ 2,730,000	\$ 6,200,773	\$ 32,575,000	\$ 57,522,024	\$ 122,128	\$ 33,815,000	\$ 12,202,767	\$ 5,796,128	\$ 3,257,040	\$ 392,354,141	n/a	\$ 3,715
2009	219,828,561	2,875,000	6,624,952	42,850,000	39,886,147	176,232	37,610,000	13,752,767	5,001,351	1,794,497	370,399,507	4.64%	3,581
2008	201,651,051	-	7,033,767	20,050,000	8,594,451	230,336	42,690,000	15,252,767	4,206,574	331,954	300,040,900	3.85%	2,930
2007	197,423,524	-	7,673,935	24,620,000	3,201,737	421,408	48,325,000	16,591,094	3,811,371	286,443	302,354,512	4.32%	3,009
2006	194,795,976	8,952	6,703,957	29,035,000	3,570,000	511,851	50,110,000	18,054,223	3,781,989	68,856	306,640,804	4.70%	3,091
2005	195,767,805	35,777	7,112,028	30,250,000	3,483,162	646,327	58,570,000	16,864,193	4,207,688	156,471	317,093,451	5.18%	3,249
2004	177,510,425	60,415	7,508,195	11,150,000	3,281,812	505,008	65,290,000	18,119,193	3,852,139	396,557	287,673,744	4.98%	2,977
2003	136,366,800	83,045	7,887,504	12,255,000	2,800,714	289,737	64,695,000	19,344,193	3,163,616	343,654	247,229,263	4.56%	2,603
2002	120,659,470	103,830	8,240,000	13,305,000	1,670,000	373,933	70,015,000	20,539,193	3,116,181	149,753	238,172,360	4.58%	2,547
2001	118,948,258	232,921	2,130,000	14,305,000	1,745,000	467,530	71,240,000	21,558,488	3,428,761	234,569	234,290,527	4.76%	2,545

(1) Source - Fargo, ND Metropolitan Statistical Area data from Bureau of Economic Analysis, US Department of Commerce

(2) Source - Population data from FM Metrocog, City of Fargo Planning Dept, NDSU Data Center, US Census Bureau

**CITY OF FARGO, NORTH DAKOTA
RATIOS OF GENERAL BONDED DEBT OUTSTANDING
LAST TEN FISCAL YEARS
(UNAUDITED)**

Fiscal Year	General Bonded Debt Outstanding				Percentage of Actual Taxable Value of Property	Per Capita (1)
	Other General Obligation Debt	Gross Revenue Debt	Fannie Mae Notes Payable	Total		
2010	\$ 2,730,000	\$ 6,200,773	\$ -	\$ 8,930,773	2.76%	\$ 85
2009	2,875,000	6,624,952	1,271,000	10,770,952	3.43%	104
2008	-	7,033,767	1,400,000	8,433,767	2.79%	82
2007	-	7,673,935	1,400,000	9,073,935	3.12%	90
2006	8,952	6,703,957	2,210,000	8,922,909	3.32%	90
2005	35,777	7,112,028	2,043,162	9,190,967	3.76%	94
2004	60,415	7,508,195	1,761,812	9,330,422	4.14%	97
2003	83,045	7,887,504	1,205,714	9,176,263	4.41%	97
2002	103,830	8,240,000	-	8,343,830	4.28%	89
2001	232,921	2,130,000	-	2,362,921	1.29%	26

(1) Source - Population data from FM Metrocog, City of Fargo Planning Dept, NDSU Data Center, US Census Bureau

CITY OF FARGO, NORTH DAKOTA
RATIO OF NET BONDED DEBT TO ASSESSED VALUE AND NET BONDED DEBT PER CAPITA
LAST TEN FISCAL YEARS
(UNAUDITED)

Fiscal Year	Estimated Population (1)	Assessed Valuation (2)	Gross Bonded Debt	Debt Service Balance Available	Debt payable from Enterprise Funds	Net Bonded Debt	Ratio of Net Bonded Debt to Assessed Valuation	Net Bonded Debt per Capita
2010	105,600	\$ 3,419,759,611	\$ 313,454,054	\$ 67,151,036	\$ 33,815,000	\$ 212,488,018	6.21%	\$ 2,012
2009	103,428	3,325,203,475	309,788,513	57,548,208	37,610,000	214,630,305	6.45%	2,075
2008	102,404	3,201,497,937	271,424,819	44,286,451	42,690,000	184,448,368	5.76%	1,801
2007	100,477	3,080,628,987	278,042,459	57,619,829	48,325,000	172,097,630	5.59%	1,713
2006	99,208	2,843,133,622	280,653,885	56,440,708	50,110,000	174,103,177	6.12%	1,755
2005	97,610	2,585,416,003	291,735,610	61,756,417	58,570,000	171,409,193	6.63%	1,756
2004	96,647	2,386,169,456	261,519,035	51,921,655	65,290,000	144,307,380	6.05%	1,493
2003	94,986	2,197,710,418	221,287,349	37,822,726	64,695,000	118,769,623	5.40%	1,250
2002	93,524	2,057,129,752	212,323,300	36,640,140	70,015,000	105,668,160	5.14%	1,130
2001	92,061	1,939,315,728	206,856,179	29,449,873	71,240,000	106,166,306	5.47%	1,153

1) Source - FM Metrocog, City of Fargo Planning Dept, NDSU Data Center, US Census Bureau

2) Source - Cass County Auditor

Required NRMSIR continuing disclosure for CUSIPs: 30747M, 307531, 307490, 30747PA, 30748T

**CITY OF FARGO, NORTH DAKOTA
LEGAL DEBT MARGIN INFORMATION
LAST TEN FISCAL YEARS
(UNAUDITED)**

Legal Debt Margin Calculation for Fiscal Year 2010

Market Value of all property (1)	\$ 6,839,519,220
	50%
Assessed valuation	\$ 3,419,759,610
Debt limit (5% of assessed value)	\$ 170,987,981
Debt applicable to limit:	
General Obligation Bonds	2,730,000 (2)
Gross Revenue Debt	4,121,663 (2)
Governmental Lease Payable	119,871 (2)
Less:	
Debt available in related debt service funds	(67,785) (2)
Total net debt applicable to limit	6,903,749
Legal debt margin	\$ 164,084,232

	2010	2009	2008	2007	Fiscal Year 2006	2005	2004	2003	2002	2001
Debt limit	\$ 170,987,981	\$ 166,260,174	\$ 160,074,897	\$ 154,031,449	\$ 142,156,681	\$ 129,270,800	\$ 119,308,838	\$ 109,885,521	\$ 102,856,488	\$ 96,965,786
Total net debt applicable to limit	6,941,107	8,672,284	6,218,384	7,119,965	8,379,256	8,704,197	8,625,497	8,181,679	7,331,328	1,788,967
Legal debt margin	\$ 164,046,874	\$ 157,587,890	\$ 153,856,513	\$ 146,911,484	\$ 133,777,425	\$ 120,566,603	\$ 110,683,341	\$ 101,703,842	\$ 95,525,160	\$ 95,176,819
Total net debt applicable to the limit as a percentage of debt limit	4.23%	5.50%	4.04%	4.85%	6.26%	7.22%	7.79%	8.04%	7.67%	1.88%

(1) Source - Cass County Auditor

(2) Source - City Auditors Office

Required NRMSIR continuing disclosure for CUSIPs: 30747M, 307490E, 30748T

**CITY OF FARGO, NORTH DAKOTA
DIRECT AND OVERLAPPING DEBT
AS OF DECEMBER 31, 2010
(UNAUDITED)**

Taxing Entity	2010 Taxable Value	General Obligation Debt Outstanding	Percent Overlapping to City of Fargo	Total Direct and Overlapping Debt
City of Fargo	\$ 323,469,156	\$ 238,133,281	100.00%	\$ 238,133,281
Fargo Park District	323,469,156	6,325,000	100.00%	6,325,000
Fargo Public Schools	255,562,235	104,955,000	94.13%	98,794,142
Kindred Public Schools	15,405,566	16,340,000	0.09%	14,706
West Fargo Public Schools	169,182,271	58,855,100	43.60%	25,660,824
Subtotal overlapping debt		<u>186,475,100</u>		<u>130,794,672</u>
Total Direct and Overlapping Debt		<u>\$ 424,608,381</u>		<u>\$ 368,927,953</u>

Required NRMSIR continuing disclosure for CUSIPs: 30747M, 30747PA, 30748T, 307490E

**CITY OF FARGO, NORTH DAKOTA
SUMMARY OF DIRECT DEBT AND DEBT RATIOS
AS OF DECEMBER 31, 2010
(UNAUDITED)**

Summary of Direct Debt	Gross Debt	Less: Debt Service Funds	Net Direct Debt
Supported by Tax Increment (G.O.)	\$ 2,730,000	\$ -	\$ 2,730,000
Supported by Special Assessments	248,333,281	(29,043,642)	219,289,639
Supported by Revenues	75,263,540	(24,914,156)	50,349,384
Supported by Airport Revenue	9,530,000	(537,018)	8,992,982
Leases Payable	3,379,168	-	3,379,168
Notes Payable	1,675,876	-	1,675,876

Debt Ratios	Net Direct Debt*	Indirect & Net Direct Debt**
To 2010 Assessed Value (\$3,419,759,611)	6.64%	17.35%
Per Capita (2010 - 105,600)	\$ 2,150	\$ 5,618

* Includes GO debt supported by taxes and tax increment, special assessment debt, lease and notes obligations. Excludes debt supported by revenues.

** Indirect (overlapping) debt information can be found on page 144.

Required NRMSIR continuing disclosure for CUSIPs: 30747M, 30747PA, 30748T, 307490E

CITY OF FARGO, NORTH DAKOTA
PLEDGED REVENUE COVERAGE - GOVERNMENTAL ACTIVITIES
LAST TEN FISCAL YEARS
(UNAUDITED)

Fiscal Year	Special Assessment Bonds				Lease Revenue Bonds				Housing Revenue Bonds			
	Special Assessment Collections	Debt Service		Coverage	Lease Revenue	Debt Service		Coverage	NRI Loan Repayments	Debt Service		Coverage
		Principal	Interest			Principal	Interest			Principal	Interest	
2010	\$ 27,360,540	\$ 12,765,280	\$ 9,167,699	1.25	\$ 384,237	\$ 210,000	\$ 170,105	1.01	\$ 104,996	\$ 86,175	\$ 18,821	1.00
2009	20,503,315	14,592,491	8,457,758	0.89	383,510	205,000	178,510	1.00	104,997	84,074	20,923	1.00
2008	18,710,674	12,002,472	7,921,087	0.94	381,510	195,000	186,510	1.00	104,996	82,023	22,973	1.00
2007	19,049,962	10,417,452	7,563,252	1.06	384,210	190,000	194,210	1.00	104,996	80,022	24,974	1.00
2006	20,656,004	27,246,829	7,743,417	0.59	381,277	180,000	201,277	1.00	104,997	78,071	26,926	1.00
2005	19,458,723	9,797,620	7,596,235	1.12	382,790	175,000	207,790	1.00	104,997	76,167	28,830	1.00
2004	23,618,179	10,311,373	6,223,517	1.43	383,814	170,000	213,814	1.00	104,997	74,309	30,688	1.00
2003	19,858,624	15,677,670	6,638,073	0.89	369,430	150,000	219,430	1.00	104,997	72,497	32,500	1.00
2002	22,069,409	9,553,789	5,782,506	1.44	111,621	-	111,621	1.00	-	-	-	-
2001	16,298,270	8,550,966	4,809,326	1.22	-	-	-	-	-	-	-	-

Fiscal Year	Convention Bureau Revenue Bonds				Parking Revenue Bonds					
	1% Lodging Tax	Debt Service		Coverage	Parking Revenue	Less:	Net Available Revenue	Debt Service		Coverage
		Principal	Interest			Operating Expenditures		Principal	Interest	
2010	n/a	n/a	n/a	n/a	\$ 1,074,258	\$ 660,212	\$ 414,046	\$ 55,000	\$ 58,889	3.64
2009	n/a	n/a	n/a	n/a	910,807	577,977	332,830	50,000	61,539	2.98
2008	541,826	120,000	16,250	3.98	769,484	496,709	272,775	50,000	64,114	2.39
2007	493,352	115,000	23,495	3.56	847,631	428,796	418,835	45,000	66,364	3.76
2006	448,677	105,000	30,110	3.32	867,811	402,395	465,416	45,000	68,569	4.10
2005	375,059	100,000	36,360	2.75	927,098	395,605	531,493	45,000	70,706	4.59
2004	380,470	95,000	42,155	2.77	904,512	402,248	502,264	40,000	72,546	4.46
2003	359,369	90,000	47,555	2.61	773,581	438,107	335,474	40,000	74,306	2.93
2002	363,983	85,000	52,570	2.65	740,377	360,317	380,060	35,000	72,343	3.54
2001	332,346	80,000	57,170	2.42	628,101	280,207	347,894	-	34,909	10

Fiscal Year	Sales Tax Revenue Bonds			
	Sales Tax	Debt Service		Coverage
		Principal	Interest	
2010	\$ 15,163,328	\$ 4,910,000	\$ 773,680	2.67
2009	14,621,568	4,735,000	1,010,430	2.54
2008	10,364,101	4,570,000	1,238,930	1.78
2007	10,271,895	4,415,000	1,459,680	1.75
2006	9,697,069	1,215,000	1,456,605	3.63
2005	8,826,254	1,160,000	577,580	5.08
2004	8,092,719	1,105,000	632,830	4.66
2003	7,502,871	1,050,000	685,330	4.32
2002	5,647,132	1,000,000	735,330	3.25
2001	3,411,490	955,000	783,080	1.96

CITY OF FARGO, NORTH DAKOTA
PLEDGED REVENUE COVERAGE - BUSINESS TYPE ACTIVITIES
LAST TEN FISCAL YEARS
(UNAUDITED)

Fiscal Year	Water Revenue Bonds						Airport Revenue Bonds					
	Water Revenue	Less: Expenditures	Net Available Revenue	Debt Service		Coverage	Airport Revenue	Less: Expenditures	Net Available Revenue	Debt Service		Coverage
				Principal	Interest					Principal	Interest	
2010	\$ 17,533,098	\$ 8,957,643	\$ 8,575,455	\$ 2,685,000	\$ 1,287,694	2.16	\$ 6,722,597	\$ 3,488,605	\$ 3,233,992	\$ 1,010,000	\$ 413,254	2.27
2009	17,934,051	8,462,145	9,471,906	2,195,000	1,415,794	2.62	5,907,184	3,150,752	2,756,432	975,000	447,566	1.94
2008	17,798,504	7,940,224	9,858,280	-	1,105,059	8.92	6,444,752	3,323,596	3,121,156	940,000	239,533	2.65
2007	17,570,378	6,992,730	10,577,648	2,375,000	1,676,758	2.61	6,345,195	3,586,971	2,758,224	595,000	176,145	3.58
2006	17,011,665	8,637,725	8,373,940	2,245,000	1,742,070	2.10	6,110,962	2,963,611	3,147,351	585,000	180,970	4.11
2005	14,783,027	7,303,760	7,479,267	2,140,000	1,865,545	1.87	5,525,505	2,965,961	2,559,544	590,000	193,224	3.27
2004	13,377,984	6,595,861	6,782,123	2,050,000	1,969,870	1.69	6,331,323	2,569,153	3,762,170	-	42,170	89.21
2003	13,598,618	6,388,951	7,209,667	1,950,000	2,067,245	1.79	-	-	-	-	-	-
2002	13,610,068	5,900,554	7,709,514	1,905,000	2,164,745	1.89	-	-	-	-	-	-
2001	14,002,900	5,825,123	8,177,777	1,820,000	2,259,995	2.00	-	-	-	-	-	-

Fiscal Year	FargoDome Sales Tax Revenue Bonds				Clean Renewable Energy Bond			
	FargoDome Sales Tax	Debt Service		Coverage	Sale of by products	Debt Service		Coverage
		Principal	Interest			Principal	Interest	
2010	n/a	n/a	n/a	-	\$ 426,793	\$ 100,000	\$ 10,200	3.87
2009	-	1,810,000	42,956	-	196,927	100,000	11,050	1.77
2008	10,364,101	4,595,000	238,698	2.14	855,932	100,000	5,950	8.08
2007	10,271,895	4,395,000	380,890	2.15	499,818	100,000	142	4.99
2006	9,696,521	5,630,000	598,863	1.56	-	-	-	-
2005	8,825,107	3,990,000	830,108	1.83	-	-	-	-
2004	8,092,719	3,825,000	1,011,518	1.67	-	-	-	-
2003	7,502,871	3,370,000	1,182,910	1.65	-	-	-	-
2002	7,425,429	2,180,000	1,190,484	2.20	-	-	-	-
2001	6,822,980	2,060,000	1,062,255	2.19	-	-	-	-

**CITY OF FARGO, NORTH DAKOTA
AIRPORT REVENUE BONDS SERIES 2004D DEBT COVERAGE
(UNAUDITED)**

Maturity Year	Principal	Interest	Total Principal and Interest	Coverage of 2010 Net Revenues Available for Debt Service
2011	\$ 670,000	\$ 95,637	\$ 765,637	21.06
2012	690,000	73,528	763,528	21.12
2013	715,000	50,757	765,757	21.06
2014	745,000	26,448	771,448	20.90

2010 Net Revenues Available for Debt Service

2010 Operating Revenues	\$ 6,042,021
2010 Operating Expenses	6,444,590
Add: Depreciation	2,955,985
Gain on disposal of assets	14,682
Interest Income	64,338
General Property Tax Revenue	601,556
2010 Net Revenues Available for Debt Service	<u>\$ 16,123,172</u>

Required NRMSIR continuing disclosure for CUSIPs: 30748T, 30747M

**CITY OF FARGO, NORTH DAKOTA
DEMOGRAPHIC AND ECONOMIC STATISTICS
LAST TEN FISCAL YEARS
(UNAUDITED)**

Year	Estimated Population (1)	Personal Income (2)	Per Capita		Level of Education (1)		K - 12 Public School Enrollment (1)	Fargo Unemployment Rate (3)	State Unemployment Rate (3)	National Unemployment Rate (3)	Fargo Labor Force (3)
			Personal Income (2)	Median Age (1)	% High School Grad or Higher	% Bachelor's Degree or higher					
2010	105,600	n/a	n/a	n/a	n/a	n/a	10,455	3.9%	3.9%	9.6%	58,817
2009	103,428	\$ 7,980,697,000	\$ 39,883	30.2	93.3%	33.7%	10,414	4.2%	4.3%	9.3%	59,265
2008	102,404	7,801,096,000	39,812	30.4	94.1%	38.0%	10,474	2.7%	3.2%	5.8%	60,909
2007	100,477	6,997,666,000	36,459	30.9	93.8%	35.9%	10,494	2.6%	3.2%	4.6%	60,159
2006	99,208	6,519,605,000	34,505	32.2	92.6%	33.6%	10,665	2.5%	3.2%	4.6%	58,867
2005	97,610	6,123,960,000	32,981	31.3	94.6%	33.3%	10,880	2.7%	3.4%	5.1%	57,779
2004	96,647	5,774,021,000	31,450	n/a	n/a	n/a	11,133	2.8%	3.5%	5.5%	59,682
2003	94,986	5,420,039,000	30,341	n/a	n/a	n/a	11,190	3.0%	3.6%	6.0%	58,196
2002	93,524	5,195,937,000	29,354	n/a	n/a	n/a	11,142	2.8%	3.5%	5.8%	57,405
2001	92,061	4,925,983,000	27,998	n/a	n/a	n/a	11,332	2.1%	2.8%	4.7%	57,241

(1) Source - FM Metrocog, City of Fargo Planning Dept, NDSU Data Center, US Census Bureau, Fargo Public Schools

(2) Source - Bureau of Economic Analysis, Fargo-Moorhead (MSA)

(3) Source - North Dakota Job Service

Required NRMSIR continuing disclosure for CUSIPs: 30747M, 307531, 307490, 30747PA

**CITY OF FARGO, NORTH DAKOTA
RETAIL SALES & ESTIMATED BUYING INCOME
CASS COUNTY
(UNAUDITED)**

	Retail Sales (\$000)	Effective Buying Income (EBI) (\$000)	Median Household EBI	
			MSA	State
2010	n/a	n/a	n/a	n/a
2009	n/a	n/a	\$ 37,839	\$ 37,390
2008	3,221,627	2,971,275	\$ 37,105	\$ 36,655
2007	3,402,489	3,034,803	39,855	37,348
2006	3,178,374	2,889,780	39,210	36,981
2005	3,034,372	2,734,823	38,637	36,235
2004	2,115,084	2,564,208	36,765	34,177
2003	2,504,149	2,439,834	35,516	33,089

Source: Demographics USA, Survey of Buying Power

Required NRMSIR continuing disclosure for CUSIPs: 307490E, 30747M

**CITY OF FARGO, NORTH DAKOTA
PRINCIPAL EMPLOYERS
CURRENT YEAR AND NINE YEARS AGO
(UNAUDITED)**

Employer	2010			2001		
	Employees	Rank	Percentage of Total City Employment	Employees	Rank	Percentage of Total City Employment
Sanford Health*	3,691	1	6.28%	-	-	-
North Dakota State University*	2,401	2	4.08%	3,839	2	6.71%
Noridian/Blue Cross Blue Shield*	1,800	3	3.06%	1,600	3	2.80%
Fargo Public Schools*	1,638	4	2.78%	1,485	5	2.59%
Innovis Health*	1,285	5	2.18%	-	-	-
US Bank	1,030	6	1.75%	1,200	5	2.10%
City of Fargo	897	7	1.53%	-	9	0.00%
Microsoft	854	8	1.45%	1,100	6	1.92%
Fargo VA Medical Center*	830	9	1.41%	689	10	1.20%
Case New Holland	811	10	1.38%	850	7	1.48%
Meritcare	-	-	-	4,300	1	7.51%
Dakota Heartland Health System	-	-	-	800	8	1.40%

Source: Greater Fargo Moorhead Economic Development Corporation
Fargo Moorhead Chamber of Commerce
City of Fargo, ND

* - 12/31/2009 data, numbers for 2010 not available at time of publication

Required NRMSIR continuing disclosure for CUSIPs: 30747M, 30747PA, 307490E

CITY OF FARGO, NORTH DAKOTA
NUMBER OF CITY GOVERNMENT EMPLOYEES BY FUNCTION/PROGRAM
LAST TEN FISCAL YEARS
(UNAUDITED)

	2010	2009	2008	2007	2006	2005	2004	2003	2002	2001
General government										
City Administrator	2	2	2	3	3	3	2	2	2	1
Human Resources	11	10	10	10	9	9	10	7	9	9
Information Services	19	18	16	17	18	17	14	16	15	13
Public Information	2	2	2	-	-	-	-	-	-	-
Auditor	17	17	17	17	16	17	17	17	22	24
Municipal Court	8	8	8	8	8	8	8	8	8	8
City Assessor	12	12	11	11	11	14	10	13	11	10
Buildings & Grounds	7	8	8	6	9	10	9	9	11	8
Planning	11	10	11	10	11	9	10	9	9	10
Central Garage	23	27	23	20	25	24	24	22	23	23
City Commission	8	8	8	8	7	8	8	7	7	8
General Support		-	-	-	-	-	-	1	1	1
Public safety										
Inspections	21	20	21	19	22	19	18	18	21	19
Traffic Engineering	9	8	8	8	9	8	8	9	5	6
Fire Department	114	116	103	100	99	101	99	95	88	87
Police Department	162	155	150	149	149	144	140	135	128	147
Public works										
City Engineering	49	44	43	38	41	41	41	39	44	44
Streets & Sewers	49	52	48	48	46	49	48	43	43	44
Public health & welfare										
Health	118	120	117	108	119	115	114	108	104	106
Homeless shelter	13	14	12	-	-	-	-	-	-	-
Recreation & culture										
Public Library	50	53	63	41	42	40	40	44	37	37
Civic Memorial Auditorium	18	14	22	24	20	17	11	37	23	11
Urban redevelopment	3	3	3	3	4	4	6	4	5	5
Public transportation	21	21	19	15	7	5	6	6	6	5
Business-type funds										
Airport	19	18	17	16	16	16	16	16	15	16
Water	40	41	41	40	39	37	41	41	45	45
Wastewater	20	20	22	19	18	18	20	20	21	21
Solid waste	52	52	49	48	46	48	50	49	50	52
Storm sewer	5	4	3	3	3	3	2	2	1	1
Street Lighting	2	3	3	3	3	2	2	2	1	1
Forestry	12	10	14	11	12	13	9	14	11	12
Total	897	890	874	803	812	799	783	793	766	774

- Number includes full and part time employees.

**CITY OF FARGO, NORTH DAKOTA
OPERATING INDICATORS BY FUNCTION/PROGRAM
LAST TEN FISCAL YEARS
(UNAUDITED)**

	2010	2009	2008	2007	2006	2005	2004	2003	2002	2001
Public safety										
Fire										
Number of calls answered	4,485	4,221	4,280	3,886	3,609	4,176	4,333	5,350	5,047	5,037
Number of fire inspections	7,754	6,949	7,216	7,174	7,111	7,204	7,505	8,610	6,469	6,932
Police										
Number of calls for service	47,534	48,062	46,183	44,751	43,478	42,483	39,365	38,189	37,835	38,384
Arrests	11,152	10,117	9,939	10,544	10,730	10,561	10,265	10,105	6,665	n/a
Public works										
Average daily water consumption (gallons)	9,958,030	10,510,285	9,361,096	9,897,482	10,027,112	9,441,153	9,469,337	10,073,235	9,332,208	11,410,000
Wastewater avg flow per day (MGD)	13.01	12.86	12.16	11.49	11.51	11.95	11.76	11.17	11.05	12.06
Public health & welfare										
WIC participation	2,606	2,699	2,801	2,261	2,144	2,194	1,856	1,855	1,761	1,763
Nursing visits	194,823	208,124	211,013	210,719	203,347	197,690	196,434	189,252	164,944	123,688
Recreation & culture										
Library circulation	919,845	815,998	830,287	659,139	748,382	852,541	812,174	691,637	691,637	604,908
Civic center attendance	91,115	88,828	112,032	101,382	112,050	117,875	142,890	136,065	125,002	147,442
Fargodome attendance	528,380	486,059	436,294	445,270	409,149	381,507	429,396	441,280	440,013	402,695
Public transportation										
Number of rides										
Fixed route	1,624,637	1,479,646	1,228,464	962,030	899,572	837,281	736,944	617,027	495,658	472,023
Paratransit	57,850	57,428	60,255	50,768	48,989	40,868	39,705	34,850	35,696	36,179
Infrastructure										
New projects assessed	71	32	32	29	42	51	60	45	37	70
Value of new projects	\$ 25,706,180	\$ 37,651,698	\$ 27,452,278	\$ 13,349,269	\$ 20,442,045	\$ 22,011,590	\$ 44,662,953	\$ 21,065,367	\$ 26,167,352	\$ 23,778,699

**CITY OF FARGO, NORTH DAKOTA
CAPITAL ASSET STATISTICS BY FUNCTION/PROGRAM
LAST TEN FISCAL YEARS
(UNAUDITED)**

	2010	2009	2008	2007	2006	2005	2004	2003	2002	2001
General government										
Area in square miles	48.45	48.45	47.74	46.63	46.35	44.52	44.43	42.41	42.41	37.50
Public safety										
Fire										
Stations	7	6	6	6	6	6	6	5	5	5
Vehicles	28	30	27	25	29	29	21	21	21	20
Police										
Stations	3	3	3	3	3	2	2	2	2	2
Marked cars	38	37	26	33	28	28	32	32	32	27
Public works										
Number of street lights	9,077	8,959	8,514	8,119	7,839	7,926	7,598	7,139	6,815	6,733
Miles of paved streets	371.65	367.16	369.17	363.76	358.78	352.87	347.74	341.60	330.59	324.64
Miles of water mains	436.00	428.02	424.82	411.82	403.98	398.52	393.88	383.38	370.12	363.97
Miles of sanitary sewer	425.40	414.64	404.39	398.01	384.23	357.94	352.17	343.34	332.36	327.39
Miles of storm sewer	395.05	387.88	383.56	369.01	361.04	352.42	346.45	333.24	320.22	307.28
Recreation & culture										
Print materials - Library	491,414	442,536	179,120	167,998	175,076	193,067	162,056	141,180	141,180	136,572
Public transportation										
Buses	26	22	17	18	17	13	16	16	16	16

**CITY OF FARGO, NORTH DAKOTA
SCHEDULE OF INSURANCE IN FORCE
DECEMBER 31, 2010
(UNAUDITED)**

Policy No.	Insurance Broker	Insuring Company	Coverage type / \$ Limits	Term
FBP8341772	Wells Fargo Insurance	Hartford	Boiler & equipment breakdown \$ 100,000,000	1/1/10-1/1/11
1949	State Fire & Tornado	State Fire & Tornado	Buildings & Contents \$ 282,075,458 Building \$ 32,847,227 Contents \$ 53,463,081 Outdoor property	7/1/10-6/30/11
MZI93011434	Wells Fargo Insurance	Firemen's Fund	Buildings & Contents Transit Maintenance Facility \$ 7,000,000 Building \$ 600,000 Contents	10/30/10-10/29/11
AP3387932-10	Northstar Aviation Ins. Inc	National Union	Primary Aircraft Liability \$ 100,000,000	1/1/10-1/1/11
33 2510113449 06	Insure Forward	Fidelity National Insurance Co.	Convention Visitors Bureau Flood - \$500,000 Building/\$185,000 Contents	4/15/10 - 04/15/11
33 2510115112 06	Insure Forward	Fidelity National Insurance Co.	Hector Airport Admin Building Flood - \$500,000 Building/\$78,000 Contents	4/15/10 - 04/15/11
33 2510113446 06	Insure Forward	Fidelity National Insurance Co.	City Hall Flood - \$500,000 Building/\$500,000 Contents	4/15/10 - 04/15/11
G2382520A 004	Dawson Insurance	Westchester Fire Ins Co	Environmental General Liability for Methane Operations \$2,000,000	8/14/10 - 8/14/11
87043898542010	Warner & Company	Harleysville Insurance Company	Main Library Flood - \$500,000 Building/\$500,000 Contents	3/26/10 - 3/25/11
BA230003	Warner & Company	ND Insurance Reserve Fund	Auto Liability - \$500,000 Liability	1/1/10 - 1/1/11
GL333401	Warner & Company	ND Insurance Reserve Fund	General Liability - \$2,000,000	10/29/10 - 10/29/11
IM114700	Warner & Company	ND Insurance Reserve Fund	Mobile Equipment and Trailers: Licensed - \$26,396,503 - Automobiles Unlicensed - \$9,974,304 - Mobile Equipment Fine Arts \$6,000 Portable Radio Equipment \$896,175	6/1/10 - 6/1/11
1-17334	No Broker - Direct Writer	FM Global	Fargodome \$145 MM property, \$100MM flood	11/2/10-11/02/11
33-2510089903-05	Insure Forward	Fidelity National Insurance Program	Fargodome \$500M contents & \$500M building	3/5/10-3/5/11
AIP544731501 and AIX9771239200	Insure Forward	K&K	Fargodome General Liability - \$1MM per event aggregate Excess Liability - \$10MM umbrella	11/1/10-10/31/11
AIA9771239100	Insure Forward	K&K	Auto Insurance	11/1/10 - 11/1/11
EOC967493501	AON Risk Services	Employment Practices Liability	Employment Practices	8/10-7/11